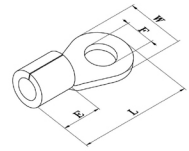


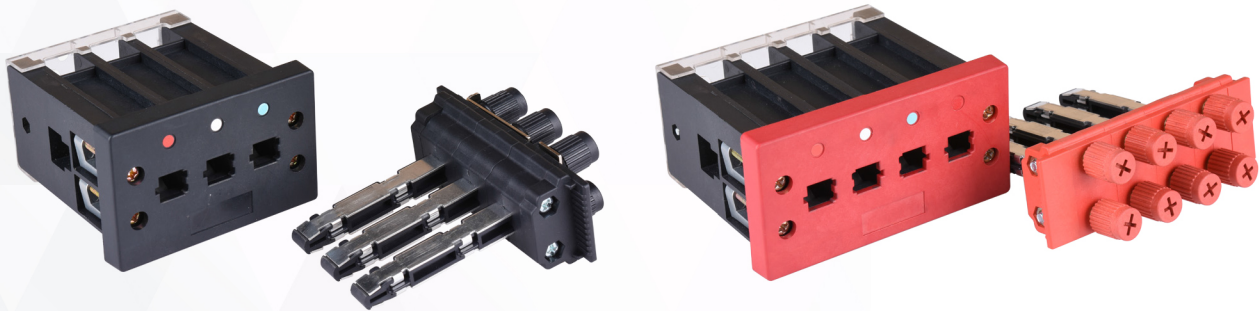
KTS-P,C (Test terminal)

전기적 특성 Specification

구분		영역	KTB-P,C
정 격 Contact rating			250V, 10A
절 연 저 항 Insulation resistance			100MΩ
내 전 압 Dielectric strength			2,500VAC 1분간 2,500VAC(50Hz/60Hz for 1 minute)
적용적합전선 Suitable wire			2mm ²
단 자 볼 트 Terminal screw			M4
연결 단자 Terminal	E		10.0mm
	F		Ø4.1 이상 Minimum Ø4.1mm
	W		8.5mm 최대 Maximum 8.5mm
	L		21.5mm 이상 Minimum 21.5mm

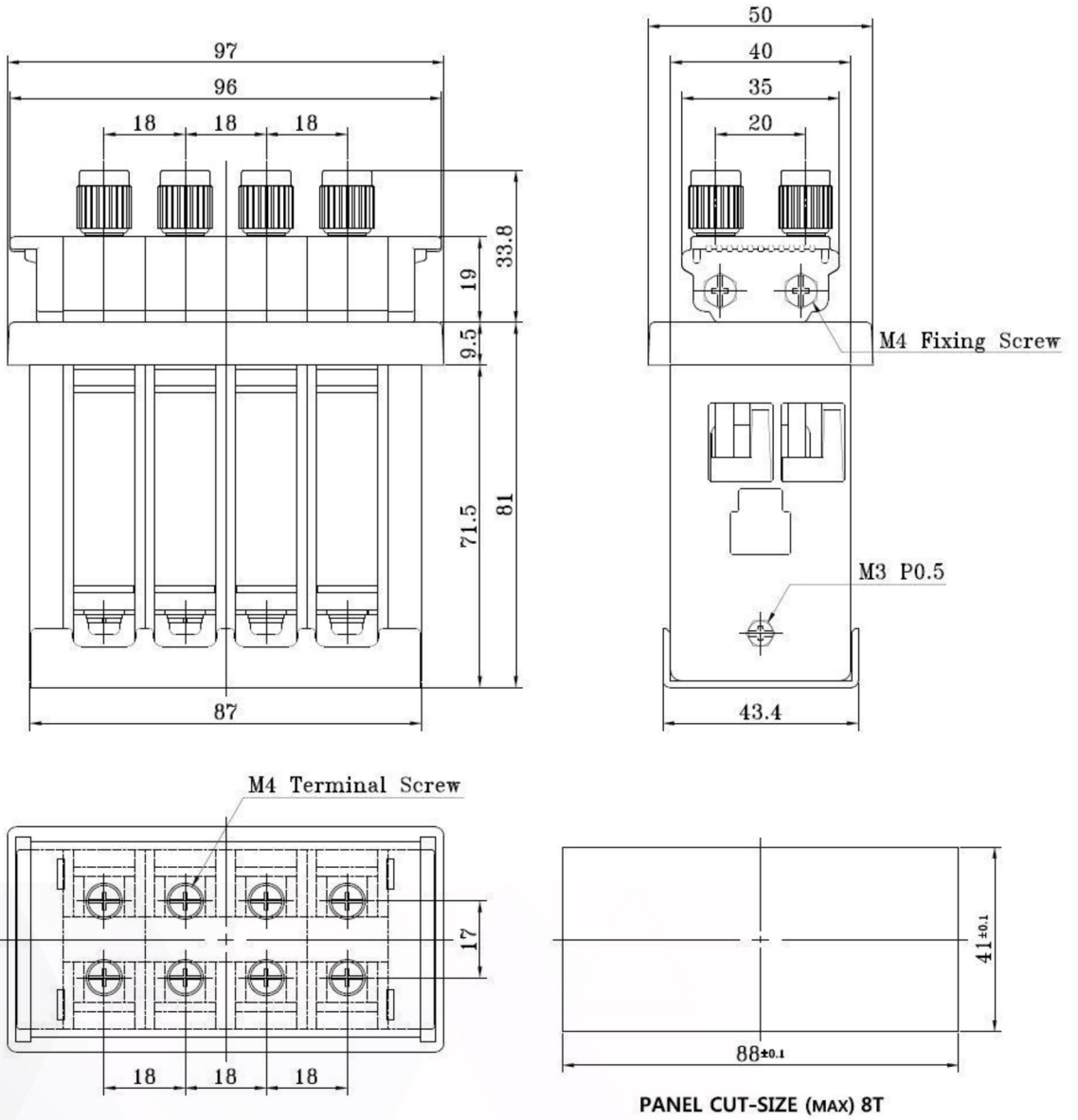


형명식별법 Selection guide



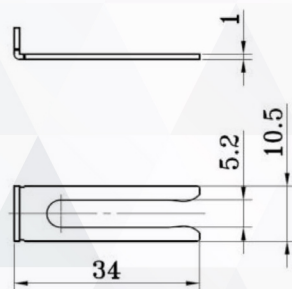
K TB - P - 3P

회사명	Koino 건흥전기 주식회사	
제품명 NAME	TB	Test Terminal Block.
	TP	Terminal Plug.
	TS	Terminal Set.
Type	P	Potential(Red)
	C	Current(Black)
Pole No.	3P	3 Pole
	4P	4 Pole

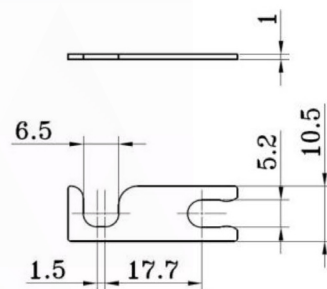


KTS-P,C-4P 외형치수도

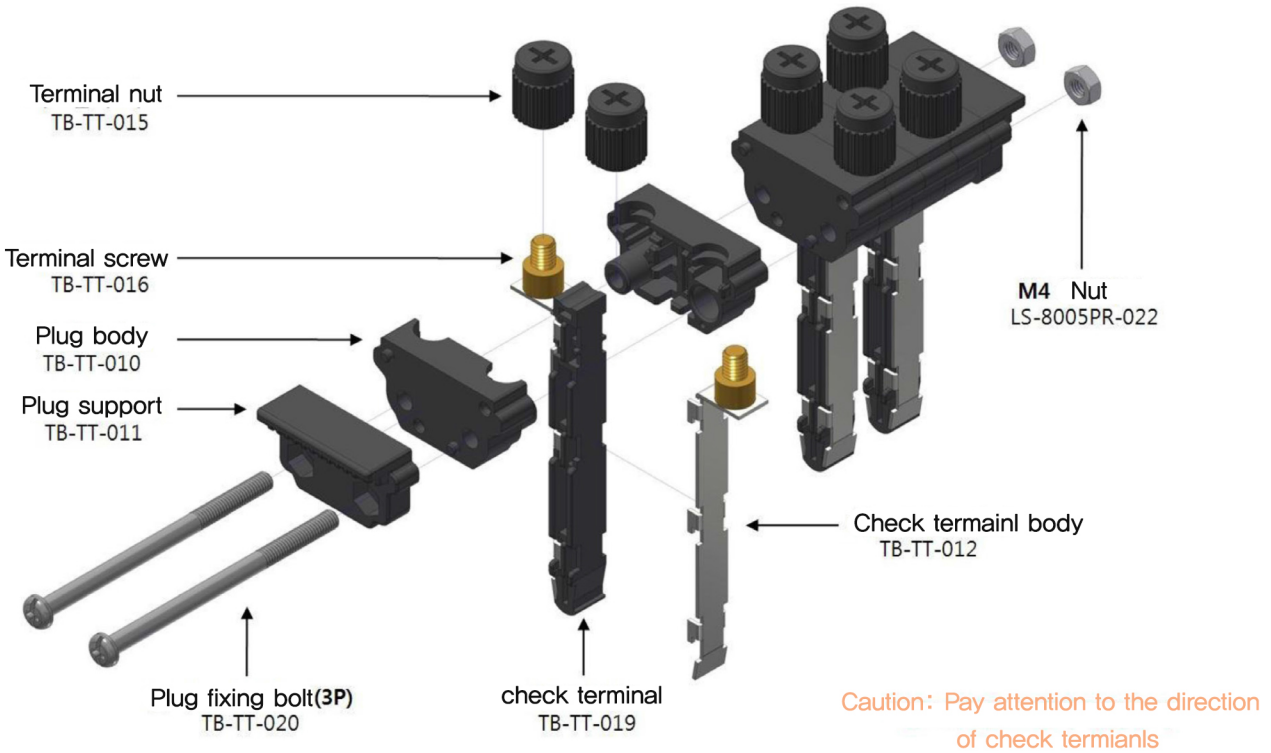
Connector Size



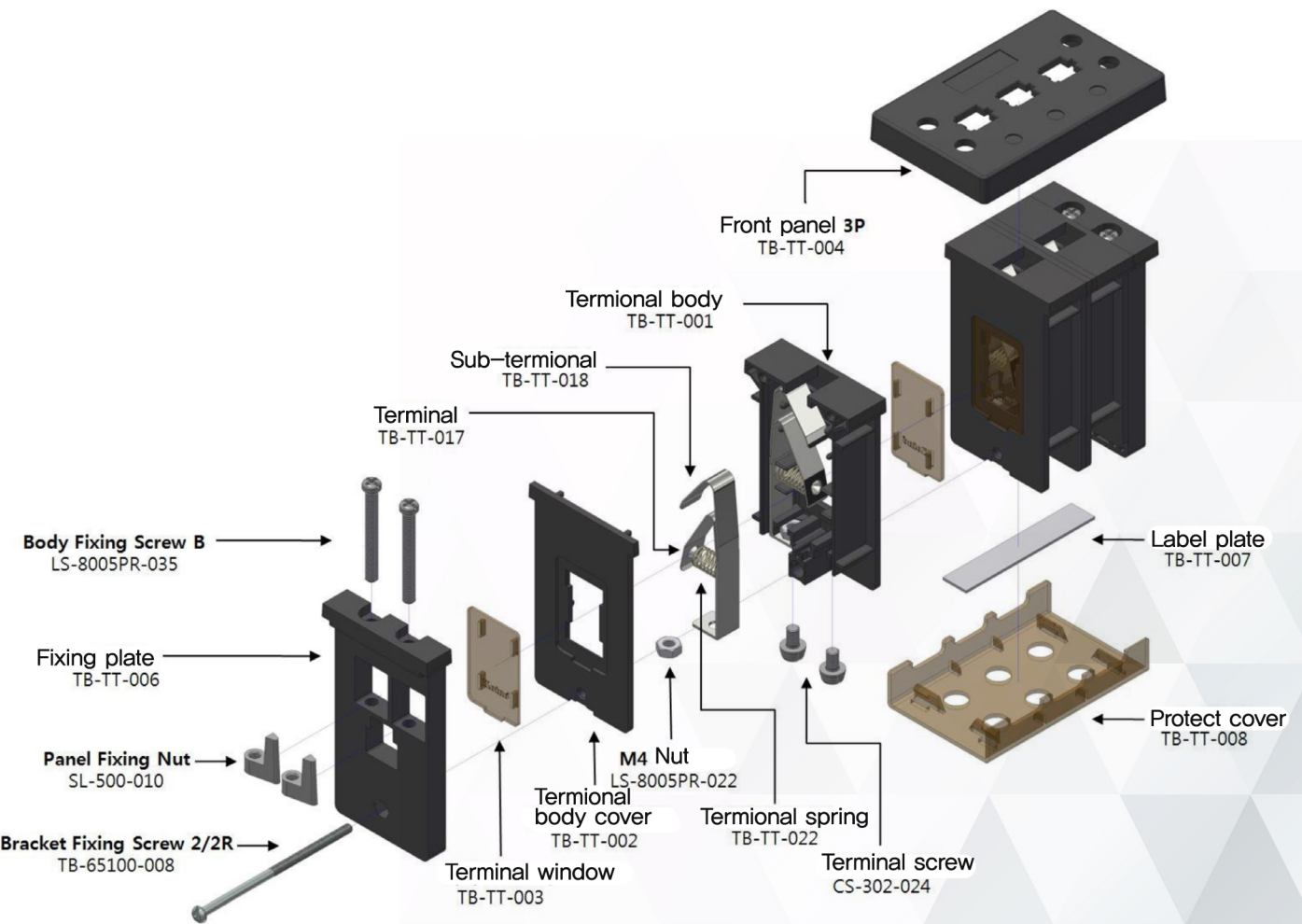
Connector A



Connector B



KTP-P,C-3P 조립분해도



KTB-P,C-3P 조립분해도